



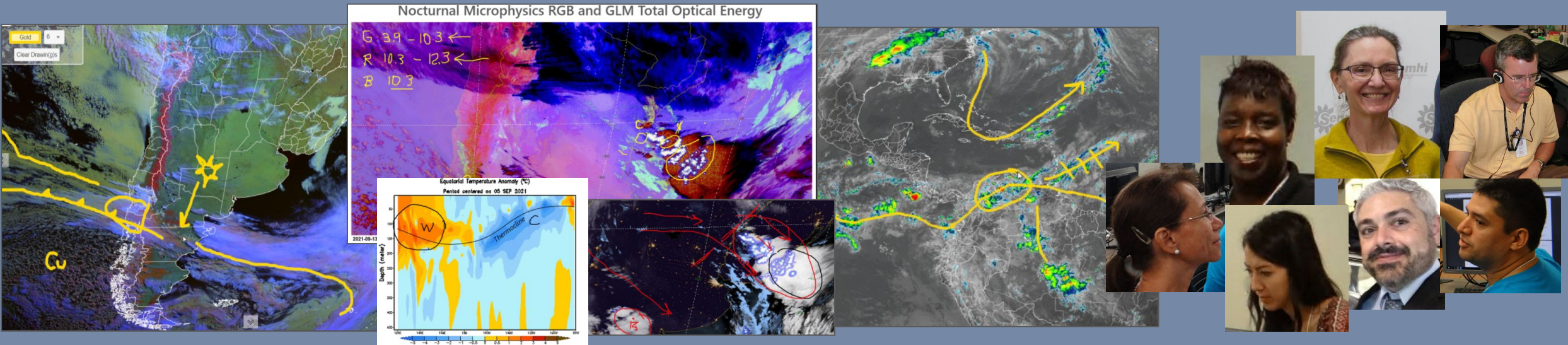
AMS 25th Conference on Satellite Meteorology
8-12 August 2022, Madison, Wisconsin
Train the Trainer Workshop



The Regional Focus Group

Keeping in Touch with your Neighbors

José Gálvez (WPC/NOAA), Bernie Connell (CIRA) and Kathy-Ann Caesar (CIMH)





What is the WMO VLab?

WMO-CGMS Virtual
Laboratory for Education
and Training in Satellite
Meteorology

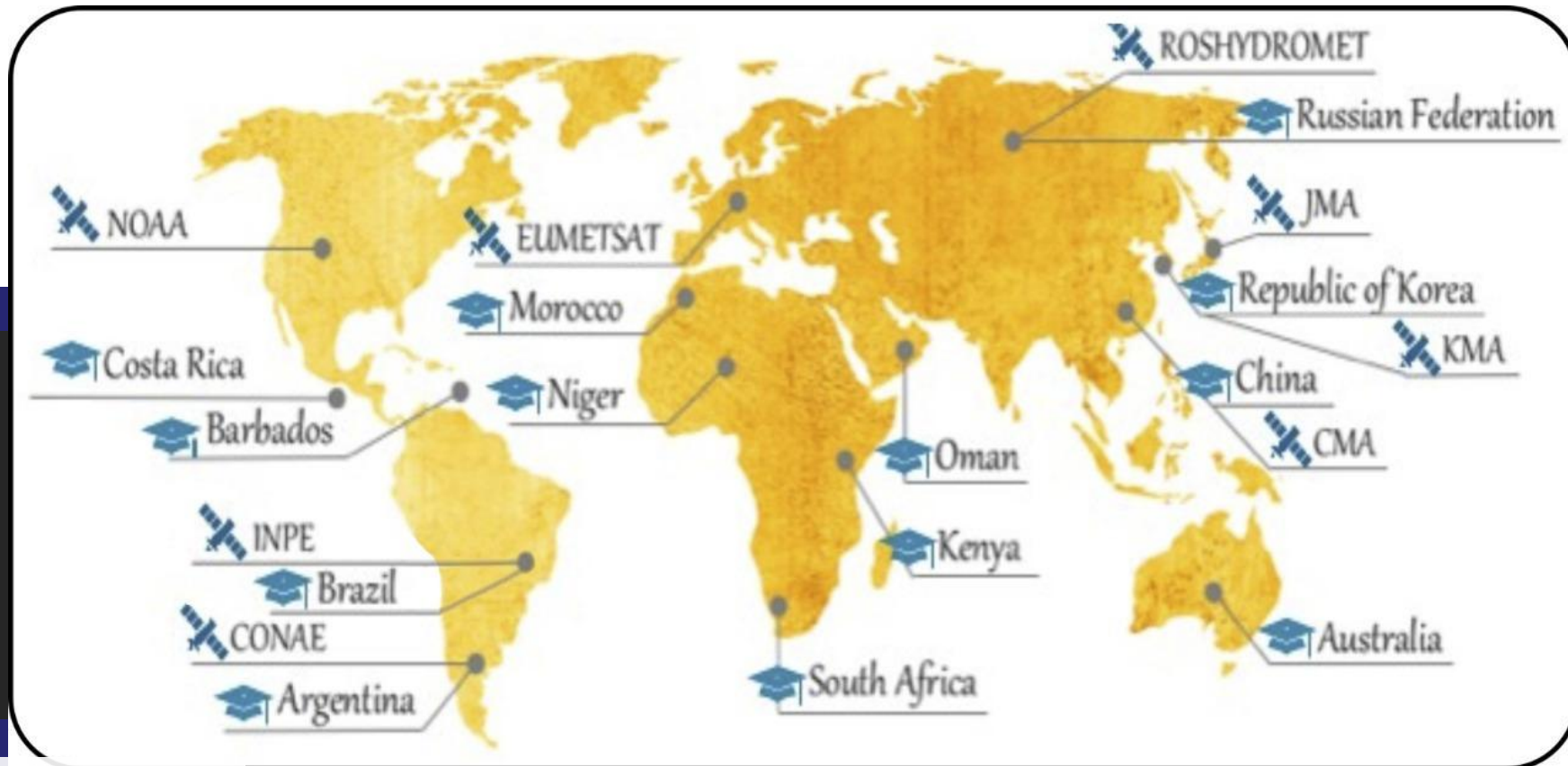
A worldwide collaborative
network connecting
Training Centres of
Excellence (CoEs)
&
Satellite Operators



VLAB Supporting Satellite
Operators and Agencies



VLab Centres of Excellence

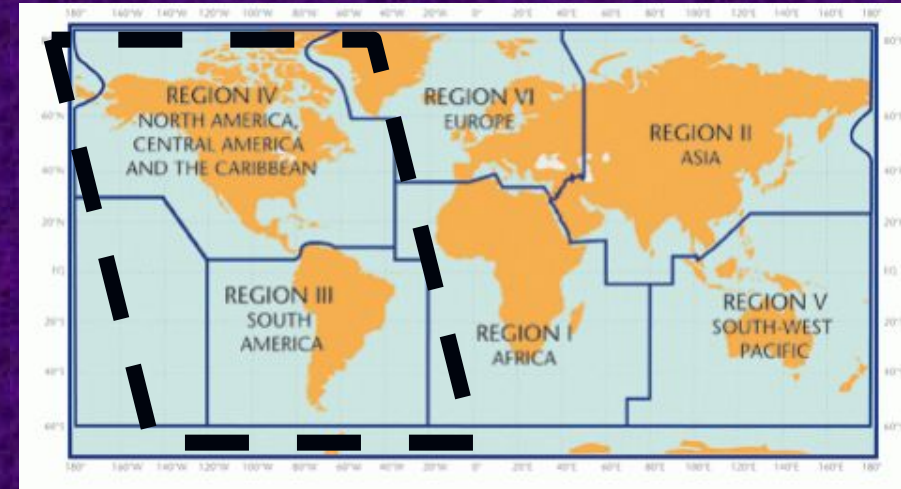
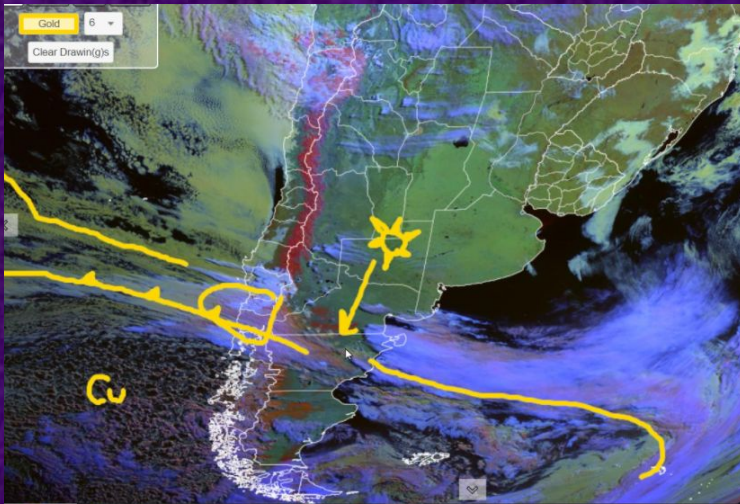


<http://www.wmo-sat.info/vlab/>

What is the Regional Focus Group

(RFG)?

Group that focuses on Virtual Monthly Regional Weather and Climate Discussions for the Americas and the Caribbean



Who are the participants?

Primary:

- Weather Services
- Other trainers and their students

Secondary:



Hydrology
Transportation
Utilities
Agriculture
Forestry
Emergency



Weather Enthusiasts



Media and Public



A typical session includes:

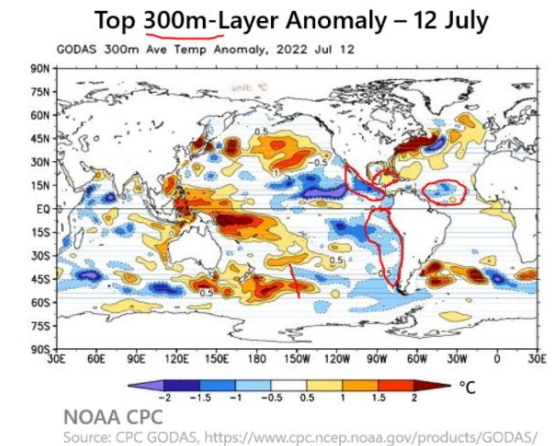
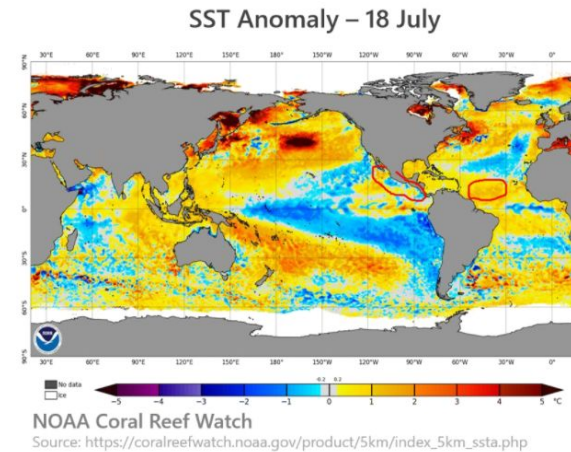
- Climate overview (SSTs, ENSO, MJO, Equatorial Tropospheric Waves, latest week flow and rainfall trends)
- Discussion of current weather
- Review of significant weather events that occurred during the past month
- Participant input on local and regional weather, and questions.

Duration: 1 – 1.5 hours

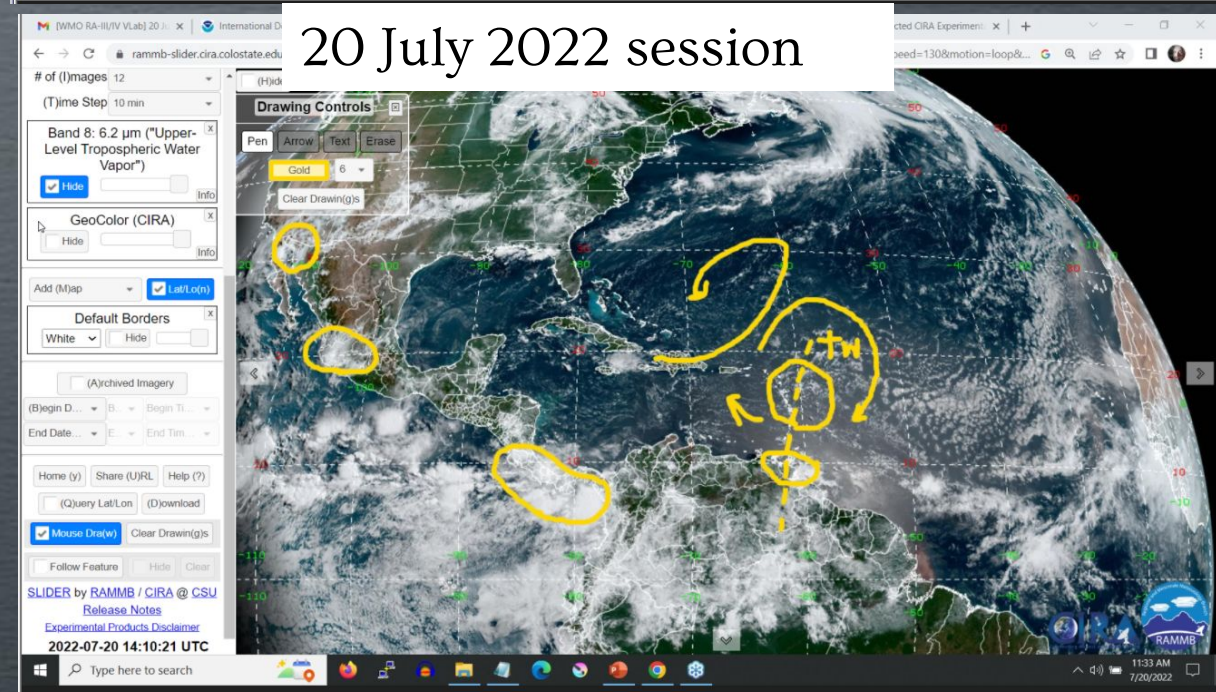
When: Monthly, generally on a Wednesday at 15 or 16 UTC

Are sea temperature anomalies deep?

Deep anomalies last longer, becoming useful for subseasonal forecasting.

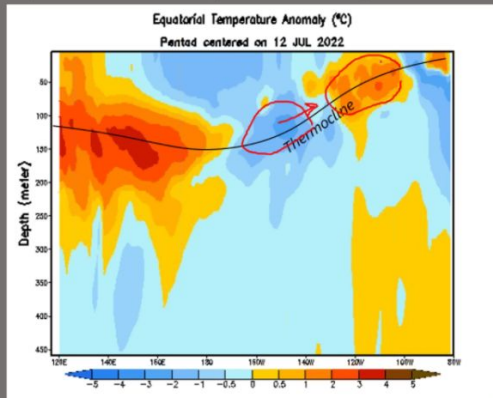


20 July 2022 session

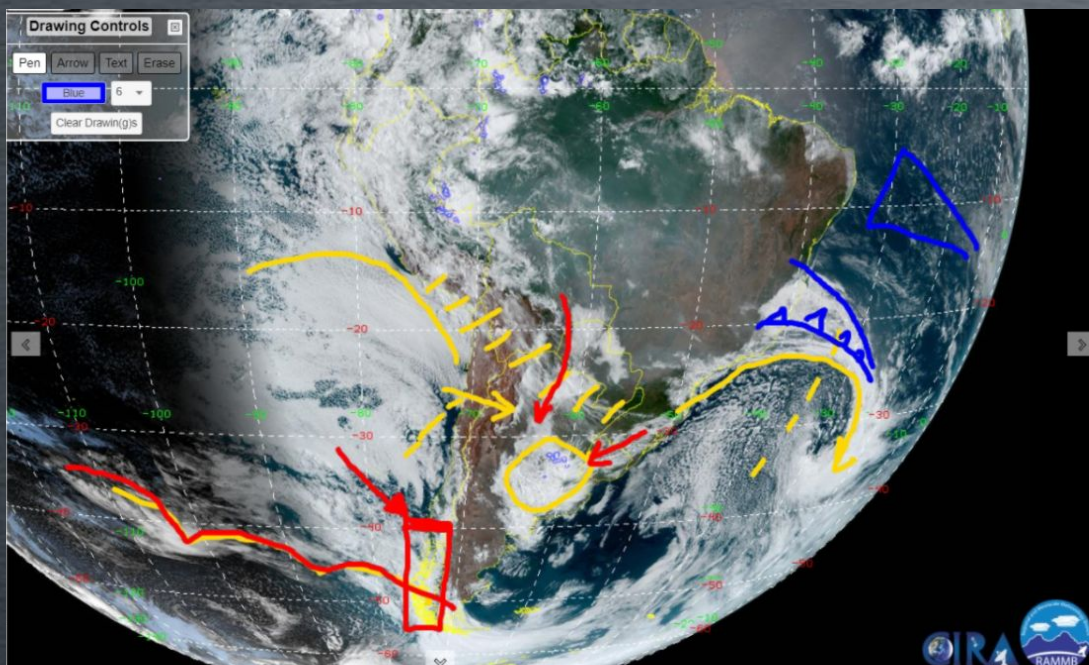
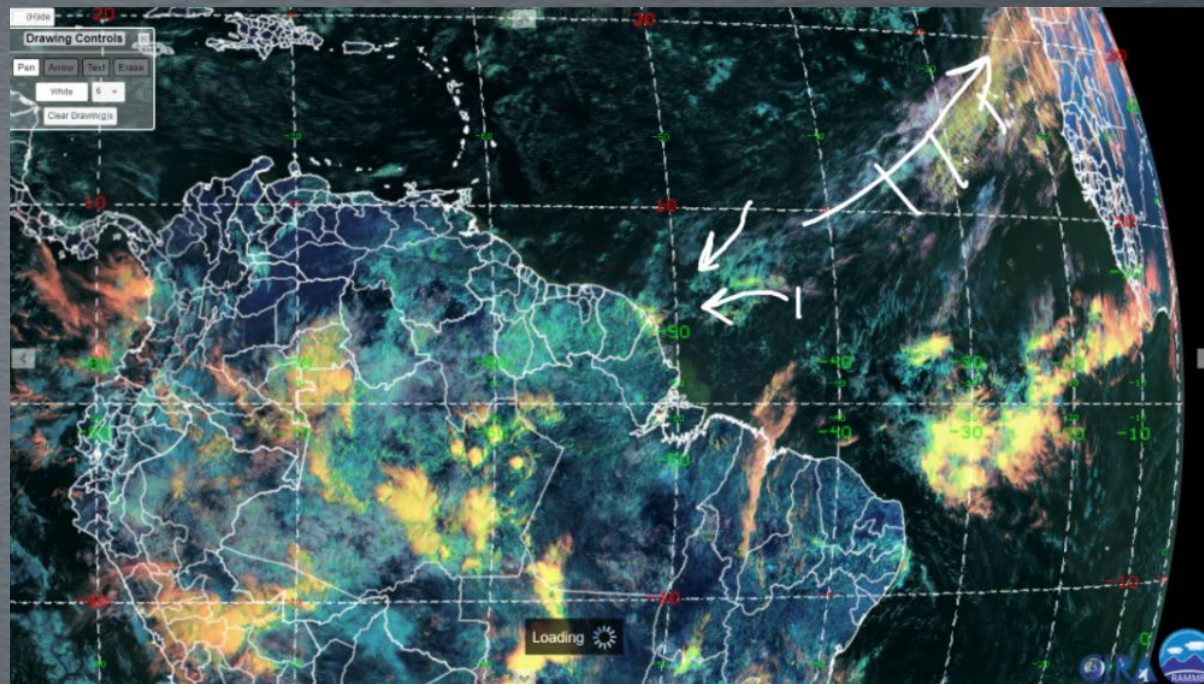
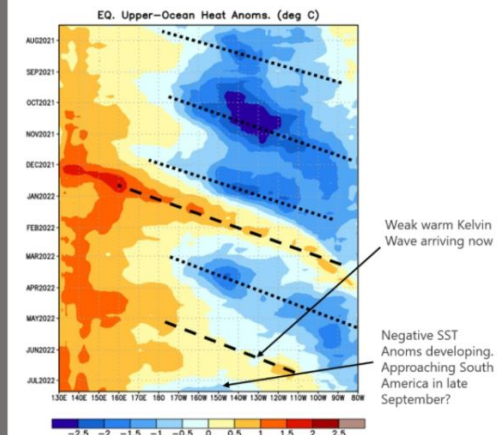


ENSO: Oceanic Kelvin Waves

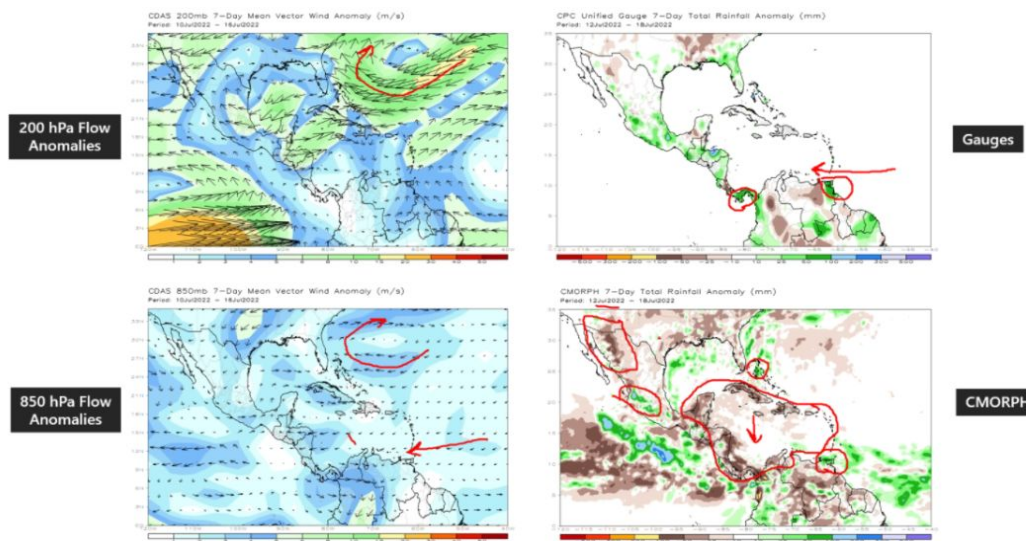
Equatorial Pacific Temperature Anomaly Cross Section



Heat Content Hovmöller

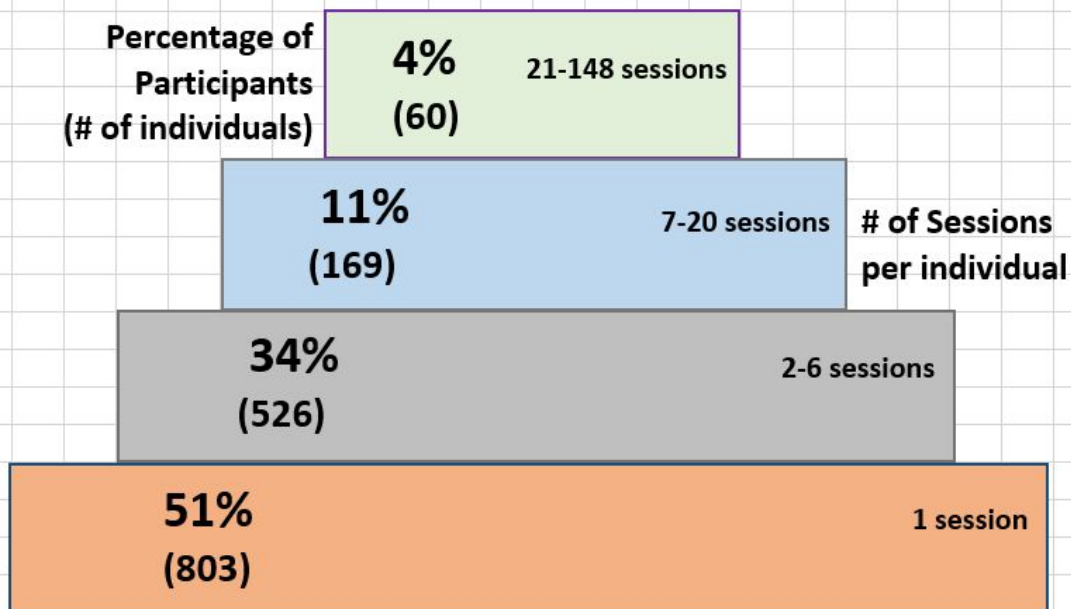


Flow and Rainfall Anomalies, Last 7 Days

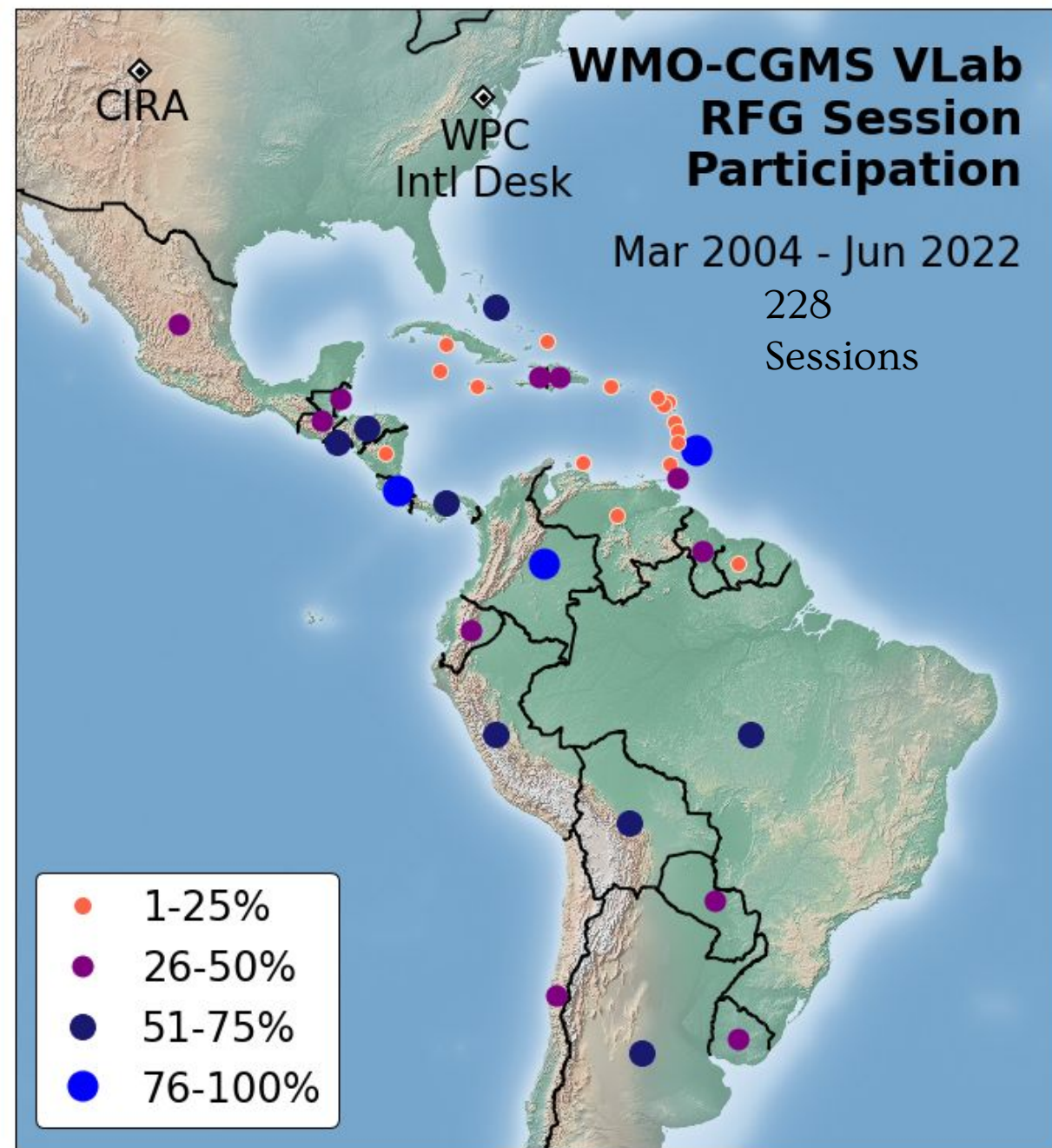


Building Capacity and Community

RFG session participation March 2004 - June 2022



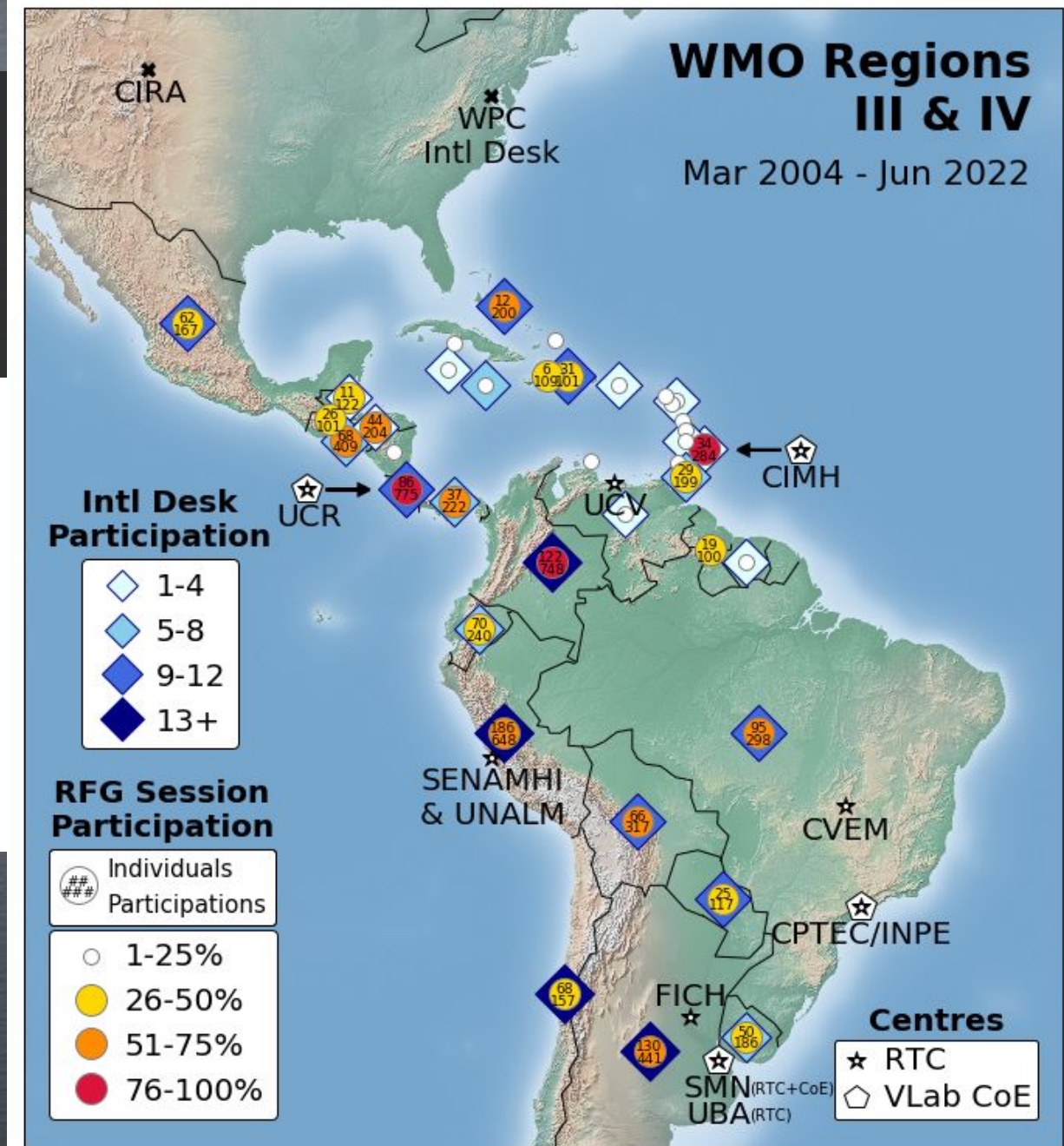
Total # of participants: 1558



Attracting Participation and Building Capacity and Community

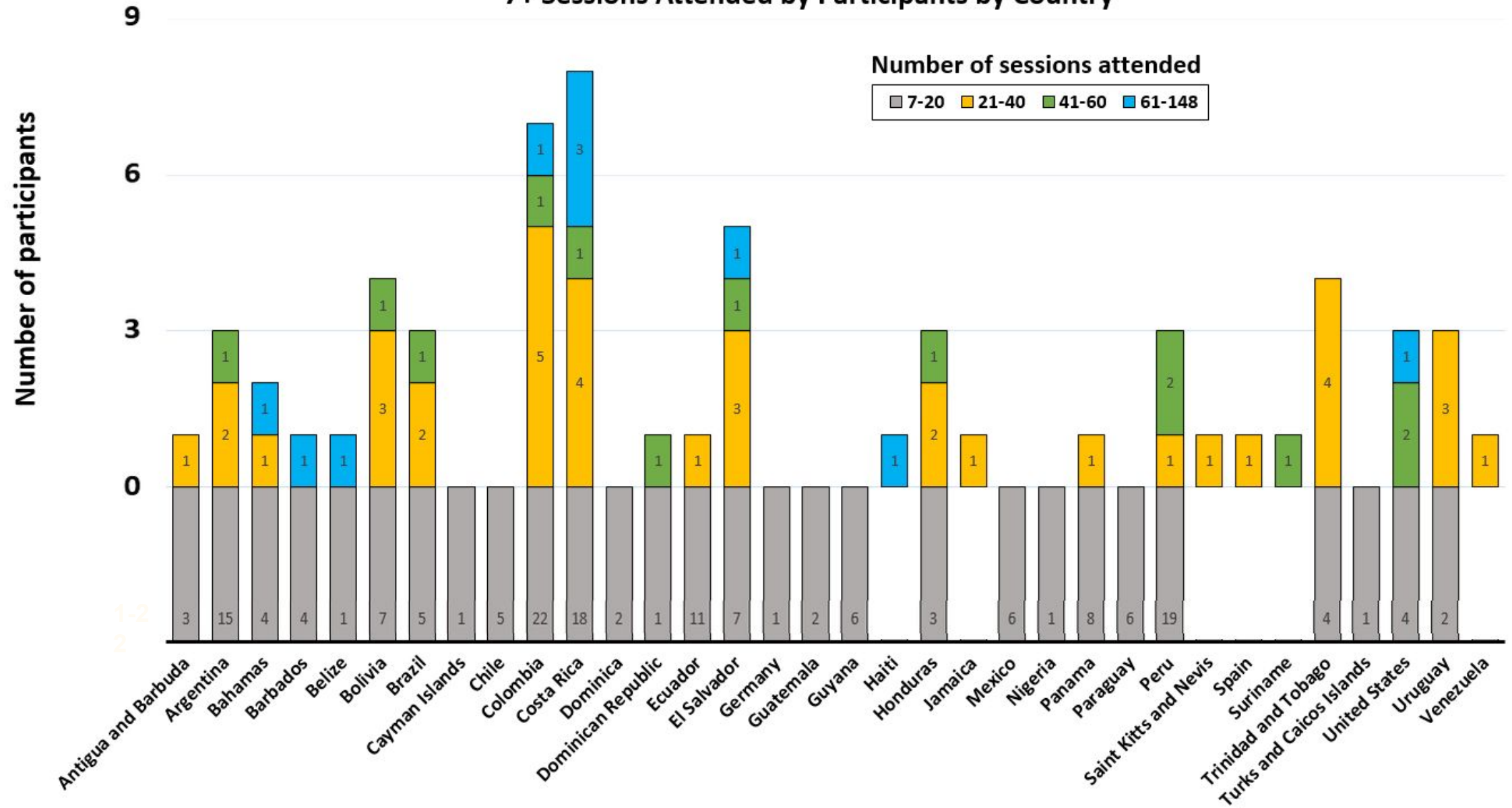
Introduction via:

- Face to Face and Virtual Training
- Visitor to the NCEP/WPC International Desks
- Student at a WMO VLab CoE
- Student at a WMO Regional Training Center (RTC)
- Colleagues and Friends



RFG Session participation March 2004 – June 2022

7+ Sessions Attended by Participants by Country



Successes

- Increased Country and Individual Participation = Community of Practice
- Collaboration: Colleagues and Previous Participants as Facilitators and Instructors of sessions.
- Students and early career professionals have moved into forecaster, instructor/trainer, researchers, manager, and senior professional roles.
- Promotion of:
 - Peer to peer interaction
 - Communication across boundaries
 - Continuing Professional Development
 - Interdisciplinary Linkages

Opportunities

- Individuals and countries share information, data, and ideas. There are opportunities to continue to build on the established trust and collaborations.
- Structure is in place to continue to host virtual monthly sessions, special topic sessions, and training event weeks for varied and inclusive audiences.
- As we reflect on the participation (numbers, interactions, feedback) we can plan and incorporate additional ways to acknowledge and promote continued professional development and interdisciplinary collaborations.

Thank you!

Gracias!